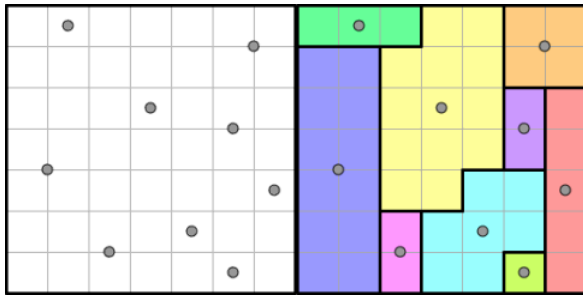


Rätseltyp Galaxien

Regeln:

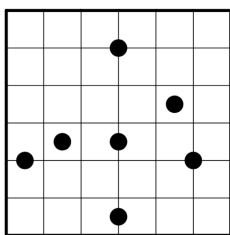
- Das Diagramm ist entlang der Rasterlinien in Gebiete zu zerlegen
- Jedes Gebiet muss genau *einen* Kreis enthalten und muss punktsymmetrisch zu diesem Kreis sein
- Es darf keine Leerräume geben

Beispiel:

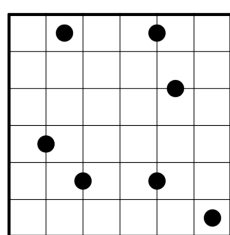


Übungsaufgaben:

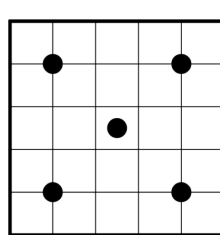
1.



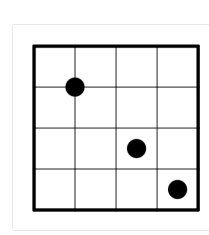
2.



3.

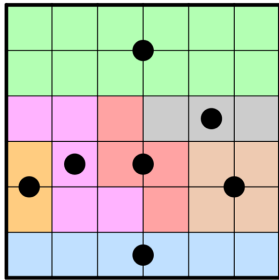


4.

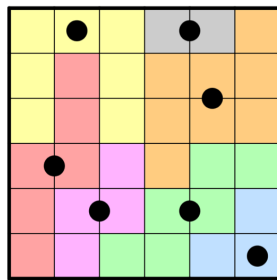


Lösungen:

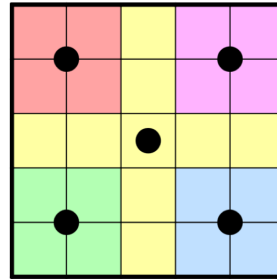
1.



2.



3.



4.

